



# SECURICO CCTV

Securico CCTV System

**IVMS-4200 Setup Guide - User Manual**

Version 2.0

February 2020

# IVMS-4200 Setup Guide

---

## **User Manual**

COPYRIGHT © 2020 Securico CCTV

ALL RIGHTS RESERVED.

## **About this Manual**

This manual is applicable to Securico CCTV Systems using Hikvision hardware and software.

The manual includes instructions for using and managing the product. Pictures, charts, images and all other information hereinafter are for description and explanation only. The information contained in the Manual is subject to change, without notice, due to firmware updates or other reasons.

Please use this user manual under the guidance of professionals.

Trademarks Acknowledgement and other Hikvision's trademarks and logos are the properties of Hikvision in various jurisdictions. Other trademarks and logos mentioned below are the properties of their respective owners.

## Legal Disclaimer

TO THE MAXIMUM EXTENT PERMITTED BY APPLICABLE LAW, THE PRODUCT DESCRIBED, WITH ITS HARDWARE, SOFTWARE AND FIRMWARE, IS PROVIDED "AS IS", WITH ALL FAULTS AND ERRORS, AND SECURICO CCTV MAKES NO WARRANTIES, EXPRESS OR IMPLIED, INCLUDING WITHOUT LIMITATION, MERCHANTABILITY, SATISFACTORY QUALITY, FITNESS FOR A PARTICULAR PURPOSE, AND NON-INFRINGEMENT OF THIRD PARTY. IN NO EVENT WILL SECURICO, ITS DIRECTORS, OFFICERS, EMPLOYEES, OR AGENTS BE LIABLE TO YOU FOR ANY SPECIAL, CONSEQUENTIAL, INCIDENTAL, OR INDIRECT DAMAGES, INCLUDING, AMONG OTHERS, DAMAGES FOR LOSS OF BUSINESS PROFITS, BUSINESS INTERRUPTION, OR LOSS OF DATA OR DOCUMENTATION, IN CONNECTION WITH THE USE OF THIS PRODUCT, EVEN IF SECURICO HAS BEEN ADVISED OF THE POSSIBILITY OF SUCH DAMAGES. REGARDING TO THE PRODUCT WITH INTERNET ACCESS, THE USE OF PRODUCT SHALL BE WHOLLY AT YOUR OWN RISKS. SECURICO SHALL NOT TAKE ANY RESPONSIBILITIES FOR ABNORMAL OPERATION, PRIVACY LEAKAGE OR OTHER DAMAGES RESULTING FROM CYBER ATTACK, HACKER ATTACK, VIRUS INSPECTION, OR OTHER INTERNET SECURITY RISKS; HOWEVER, SECURICO WILL PROVIDE TIMELY TECHNICAL SUPPORT IF REQUIRED.

SURVEILLANCE LAWS VARY BY JURISDICTION. PLEASE CHECK ALL RELEVANT LAWS IN YOUR JURISDICTION BEFORE USING THIS PRODUCT IN ORDER TO ENSURE THAT YOUR USE CONFORMS TO THE APPLICABLE LAW. SECURICO SHALL NOT BE LIABLE IN THE EVENT THAT THIS PRODUCT IS USED WITH ILLEGITIMATE PURPOSES.

IN THE EVENT OF ANY CONFLICTS BETWEEN THIS MANUAL AND THE APPLICABLE LAW, THE LATER PREVAILS.

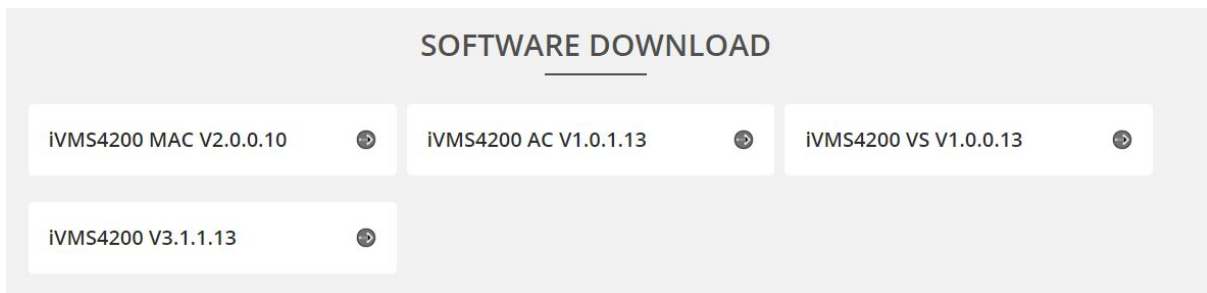
## Chapter 1 – Software to Download

The software to download and install is called **Hikvision IVMS-4200**.

Follow this link and download for Windows or Mac, whichever is applicable to you.

<https://www.hikvision.com/uk/support/download/software/ivms4200-series/>

The screenshot below shows version v3.1.1.13 (Windows) which is the latest version at the time of writing.



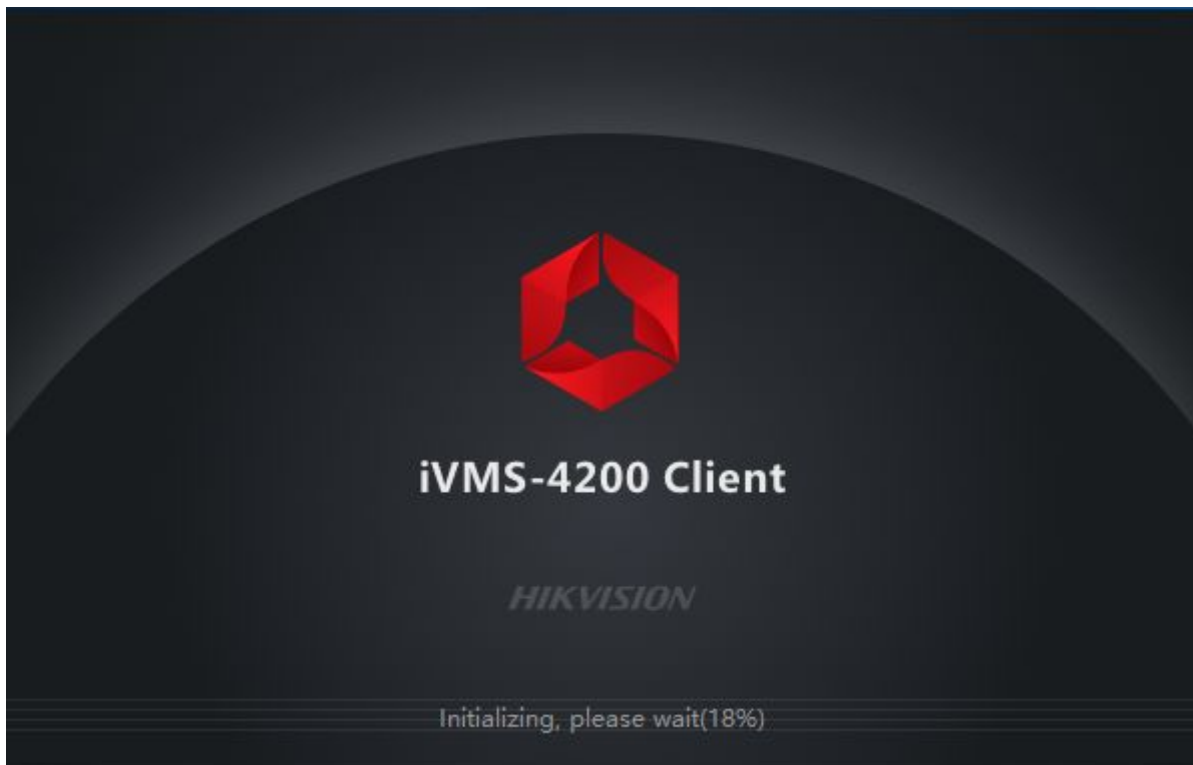
## Chapter 2 – Start the Installation

Once downloaded, please extract the file from the .RAR container and then run the setup programme.

Should you require a .RAR extractor there are many available such as 7-Zip which is free: <https://www.7-zip.org/download.html>

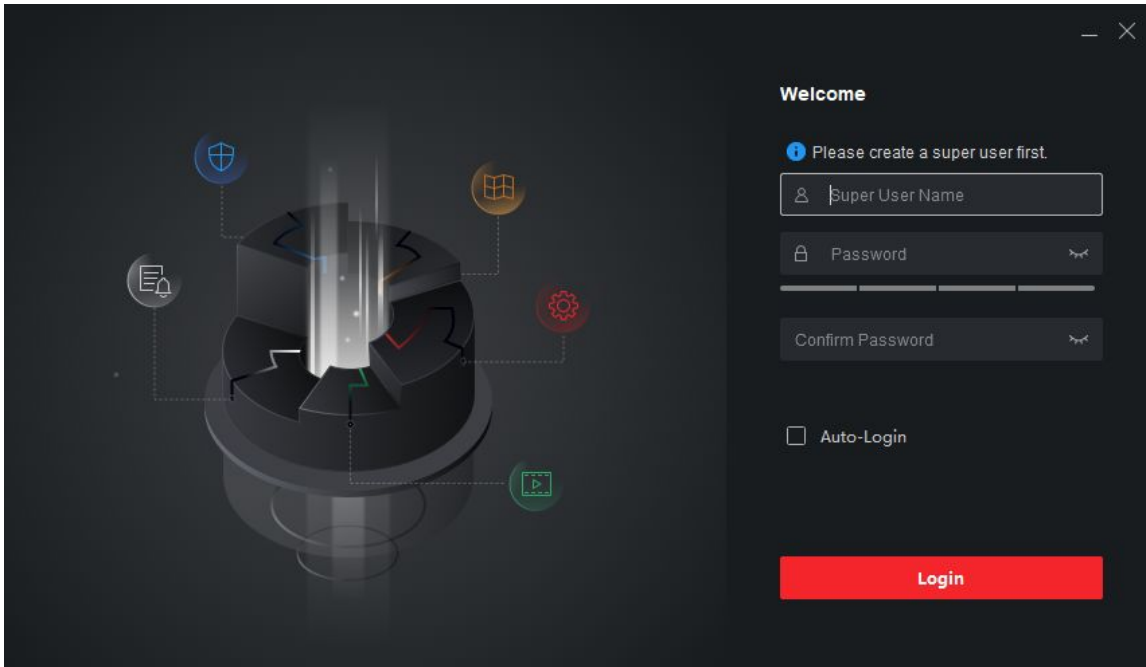
During the installation of IVMS-4200 please leave all the default options set and continue to click **next** to complete the installation.

Run the programme IVMS-4200 once it has installed and allow it to start up. It may take a minute to initialise.



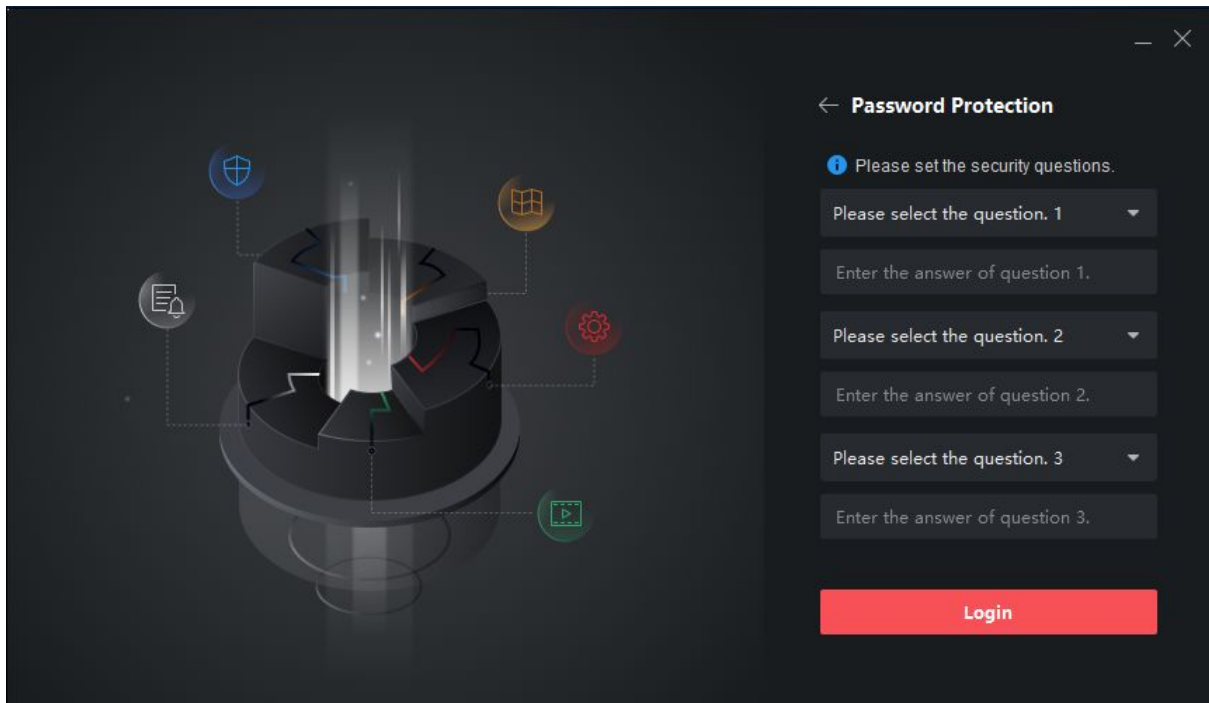
# IVMS-4200 Setup Guide

---



When the start up screen has disappeared, you will be faced with a **Register Administrator** screen.

Add a **username** and a **password**. Select **Enable Auto-Login** if you do not wish to enter this login each time the programme starts. Click **Login**

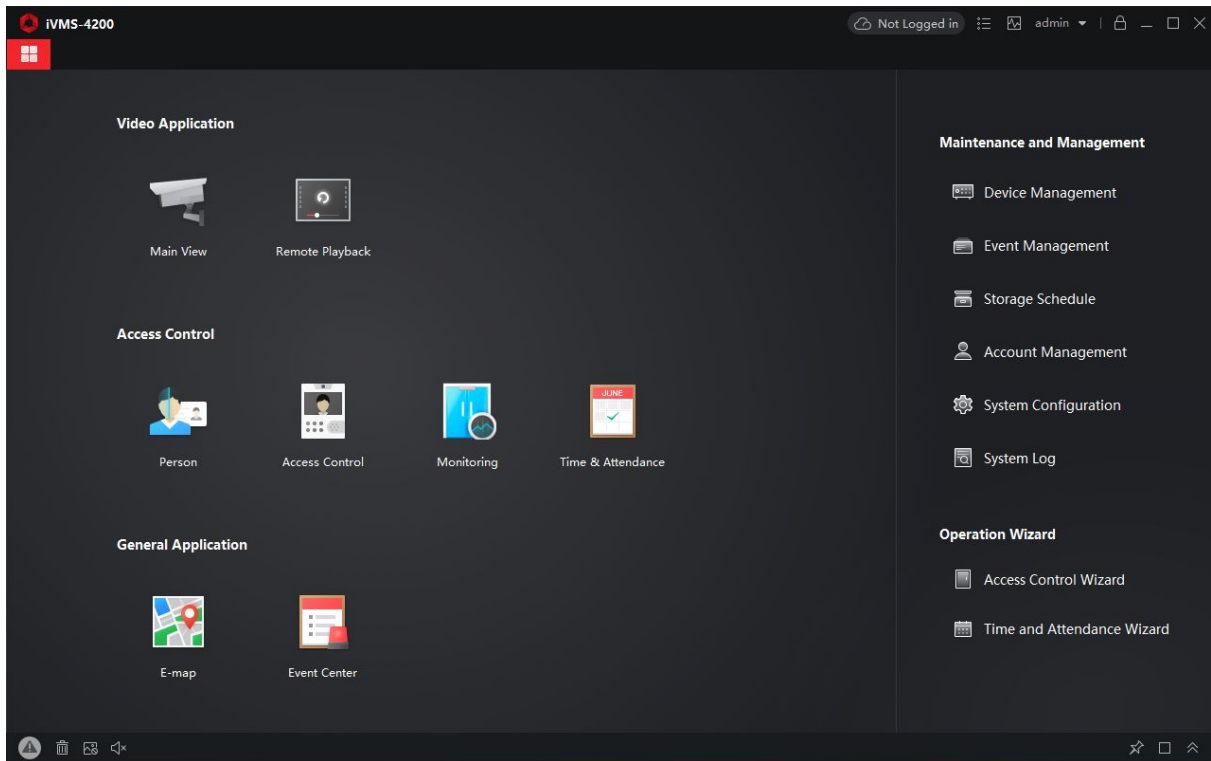


Here it will also ask you to set some **Security Questions** just in case you do ever forget your password to login to the program with.

If you ticked the "Enable Auto-login" option then you won't be affected but you will need to add security questions anyway.

You can select the drop down options to change the question and then input your answer. Once all of these are done please select "**Login**" at the bottom.

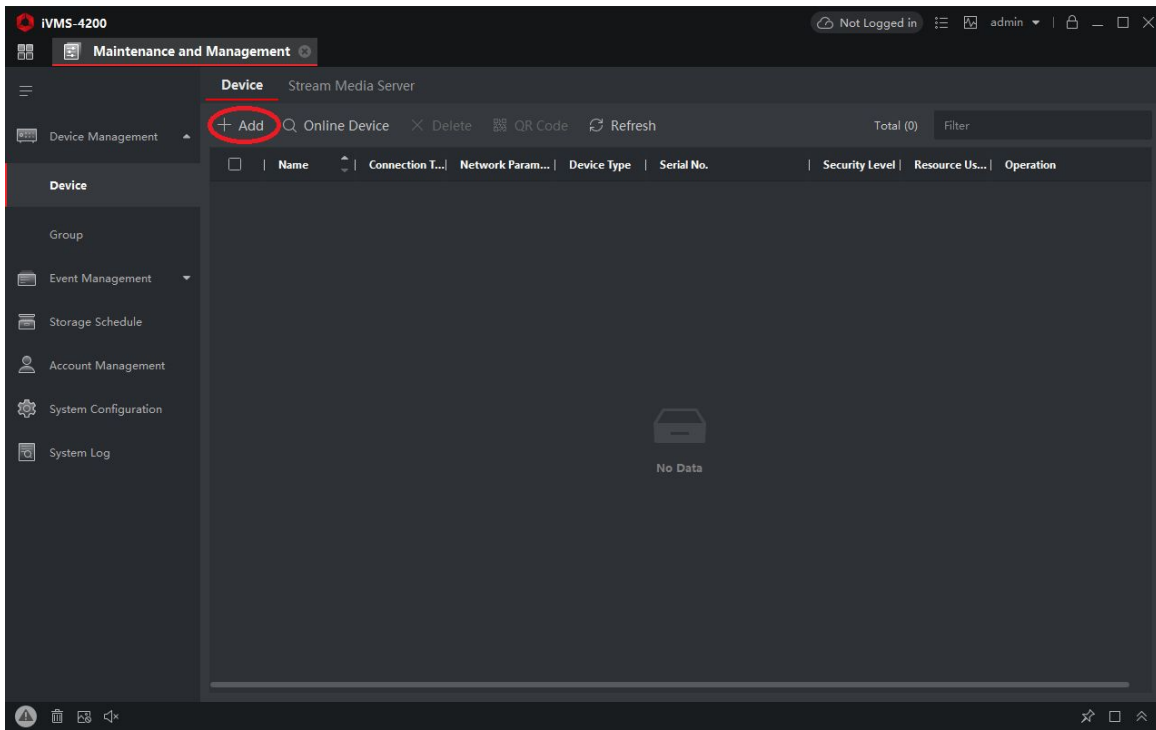
## Chapter 3 – Add Your Hik-Connect Account



The first screen you will see when IVMS-4200 has fully loaded is **the Control Panel** page.

On here if you could please select “**Device Management**” on the right hand side.

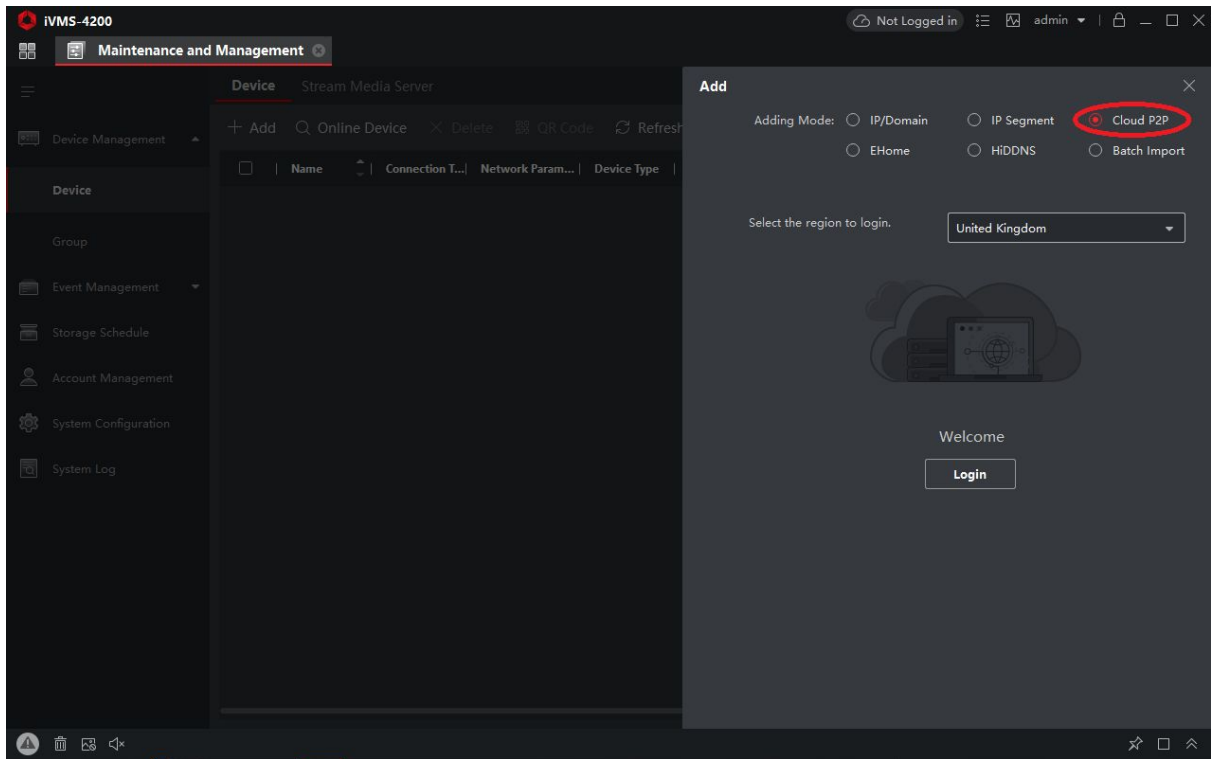
# IVMS-4200 Setup Guide



Across the top, underneath “**Device**” and “**Stream Media Server**” if you could please click “**Add**”

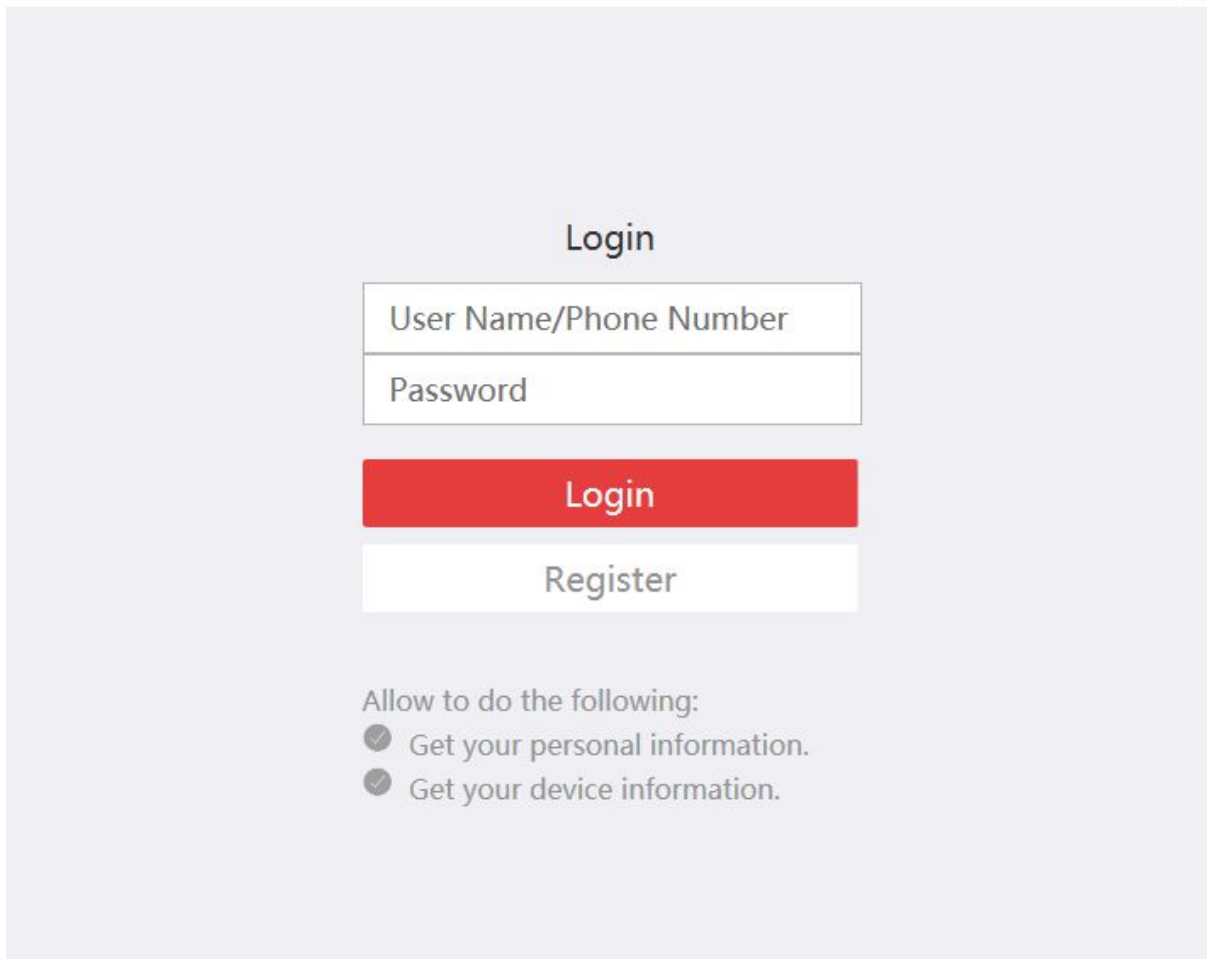


# IVMS-4200 Setup Guide



Once you've clicked add if you could please select the Adding Mode as **“Cloud P2P”**.

And then if you could select the region to login as **“United Kingdom”** and then press **Login**.



Login

User Name/Phone Number

Password

Login

Register

Allow to do the following:

- Get your personal information.
- Get your device information.

Here it will ask you for your username/phone number (you can also use an e-mail address to login if this is what you registered the account with).

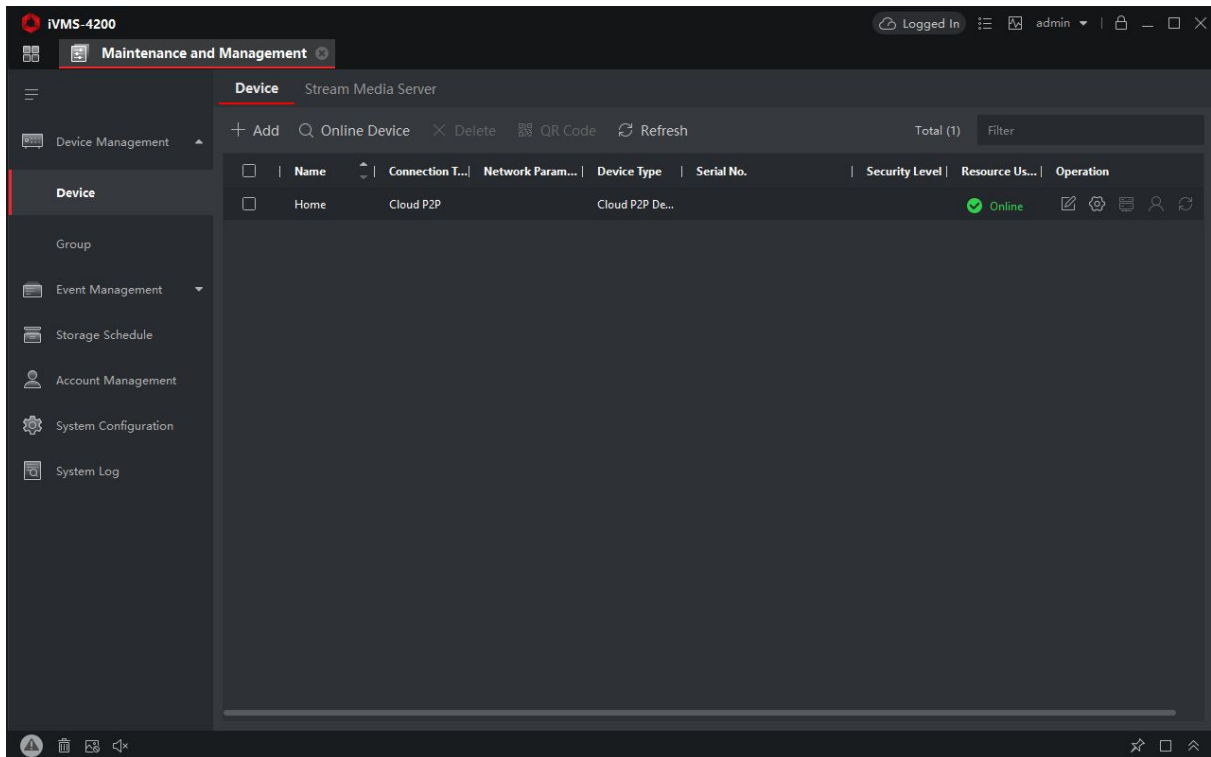
For example we could put our username as "[support@securicocctv.co.uk](mailto:support@securicocctv.co.uk)" and the password as what we have set the password to. Once you have filled these boxes in please select "**Login**"

Once you are logged in it will popup with a message that says the following:

"You have logged in. The devices will be removed from the client after logged out". You can just click "**Close**" to get rid of this message.

Your device will now be added but it will have an "**Add**" option up on the screen, out of the bottom 3 options please select "**Cancel**" as your device will already be added.

# IVMS-4200 Setup Guide

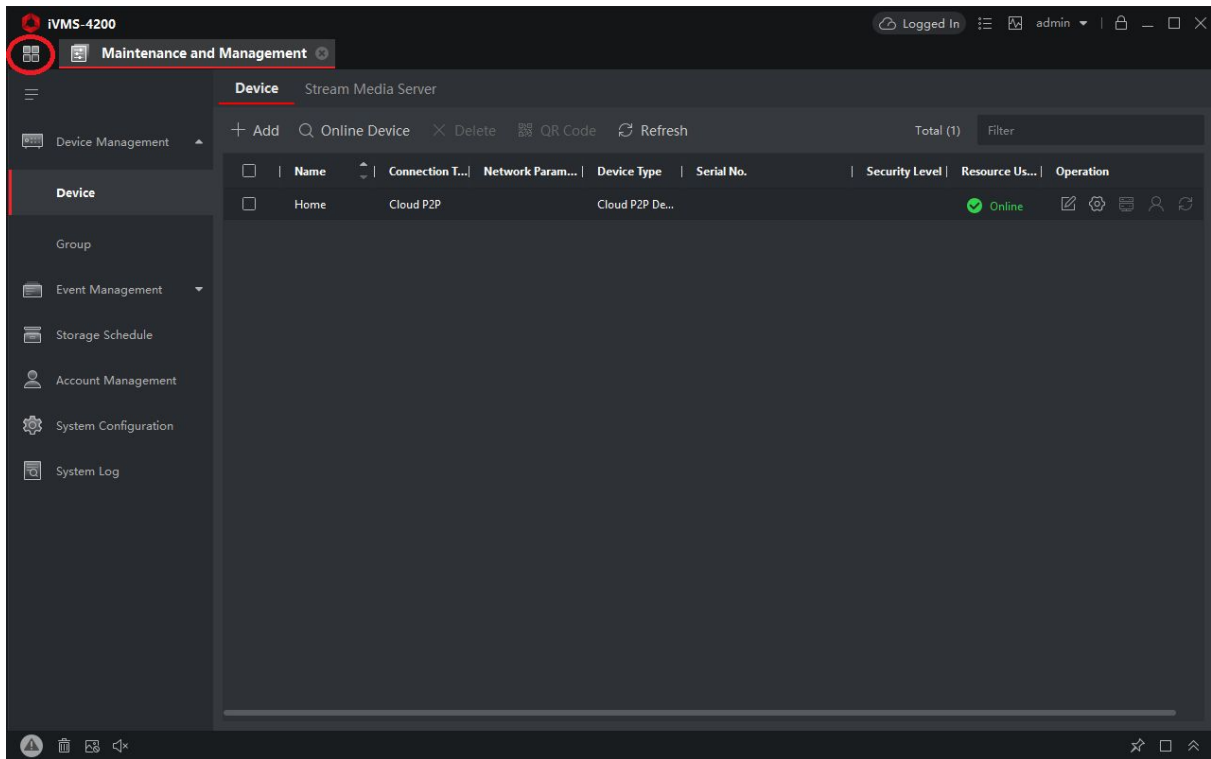


You should now be greeted with a screen that looks like this.

Once something is showing in this list and it says “Online” underneath “Resource Usage” you are almost ready to view the CCTV.

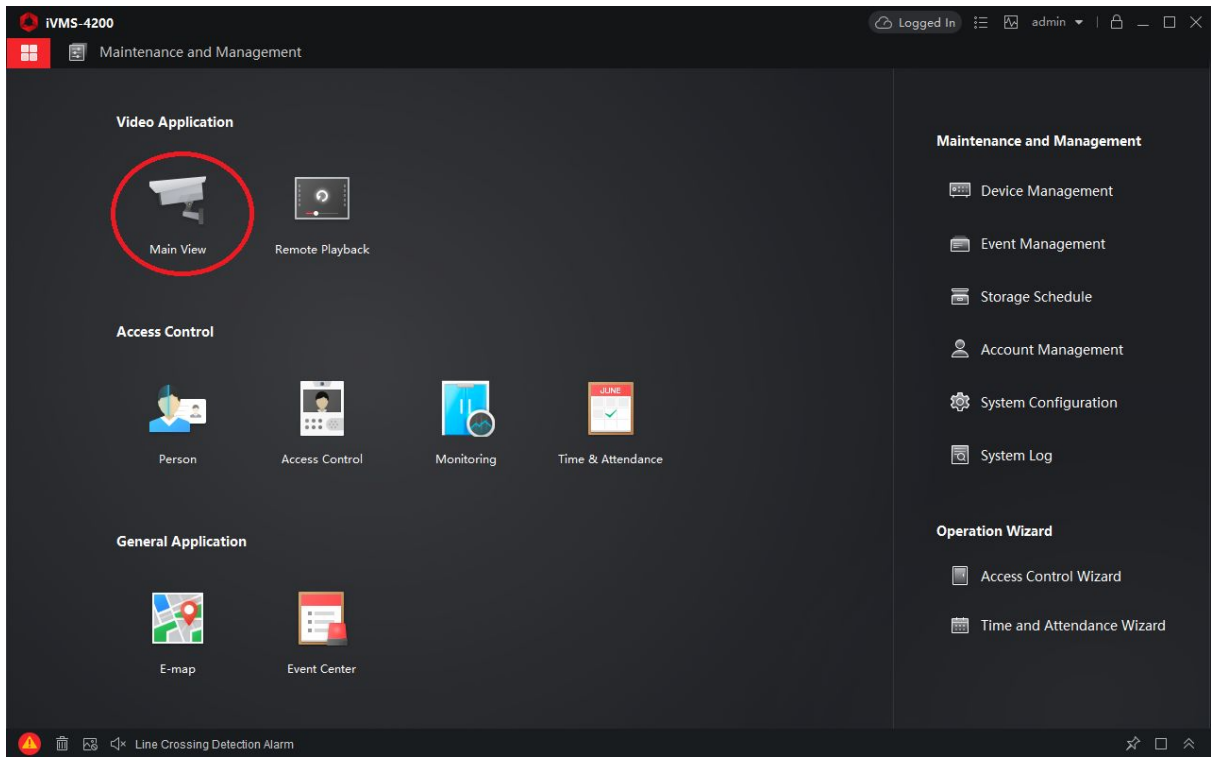
The last step is adding the **Stream Key/Verification Code** for you to be able to view the cameras.

## Chapter 4 – Add the Stream Key



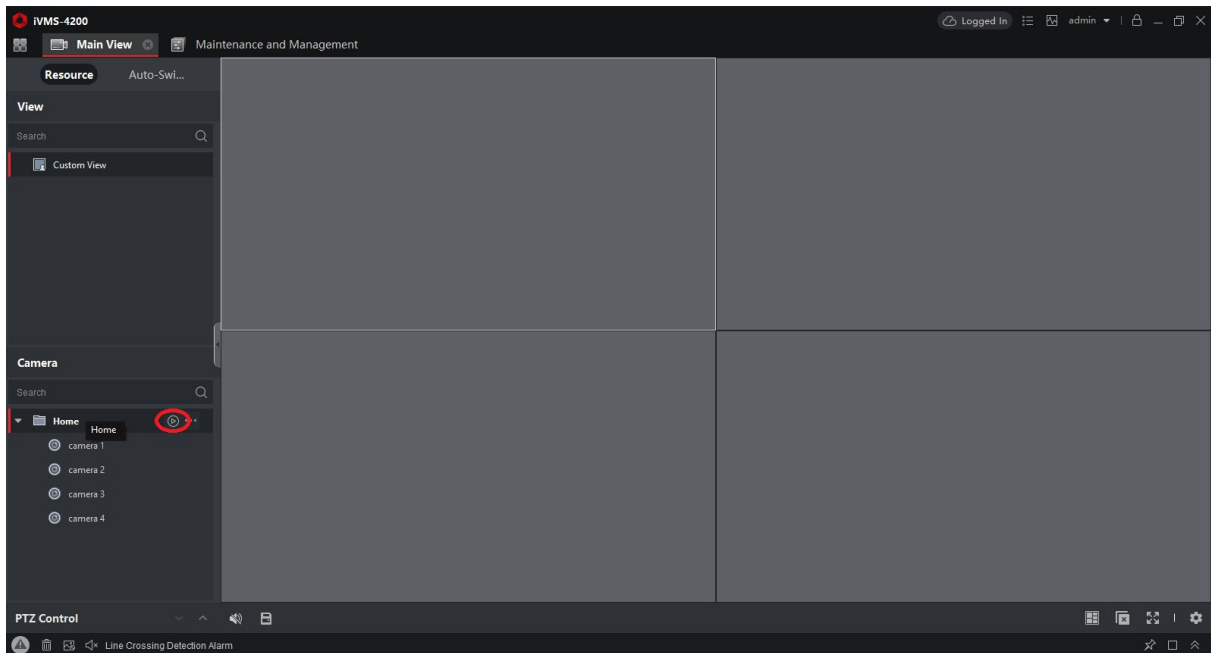
In the top left corner please select the option that is a symbol showing 4 squares (circled in red).

# IVMS-4200 Setup Guide



And then click into “**Main View**”

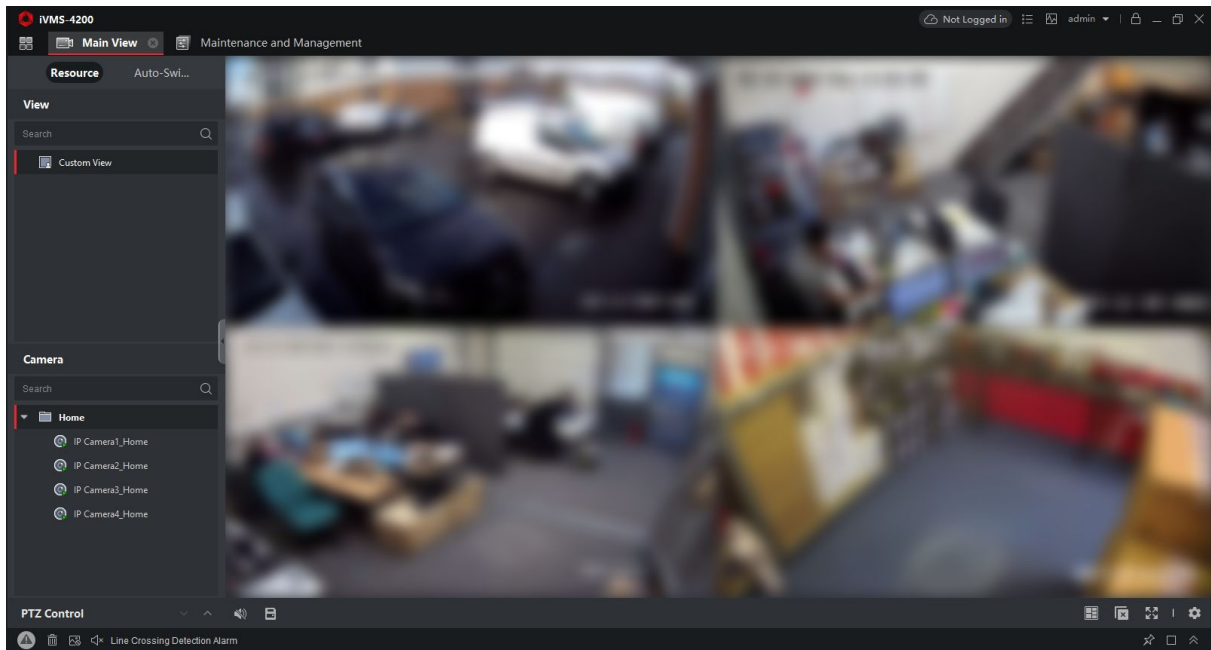
# IVMS-4200 Setup Guide



Down the left hand side of the Main View page you will have a folder there (for this example it is named “Home” but it could be named something else).

Next to this folder there will be a play button (circled in red), please click on this.

# IVMS-4200 Setup Guide



The pictures may come up automatically but also may not. They may come up with grey screens with it asking you for a verification code / stream key. If it does ask for this please click in the boxes and type in "123456" and then OK.

Once this is done you should be able to view your cameras.

You have completed the installation and setup of IVMS-4200, added your Hik-Connect account and can view your cameras.